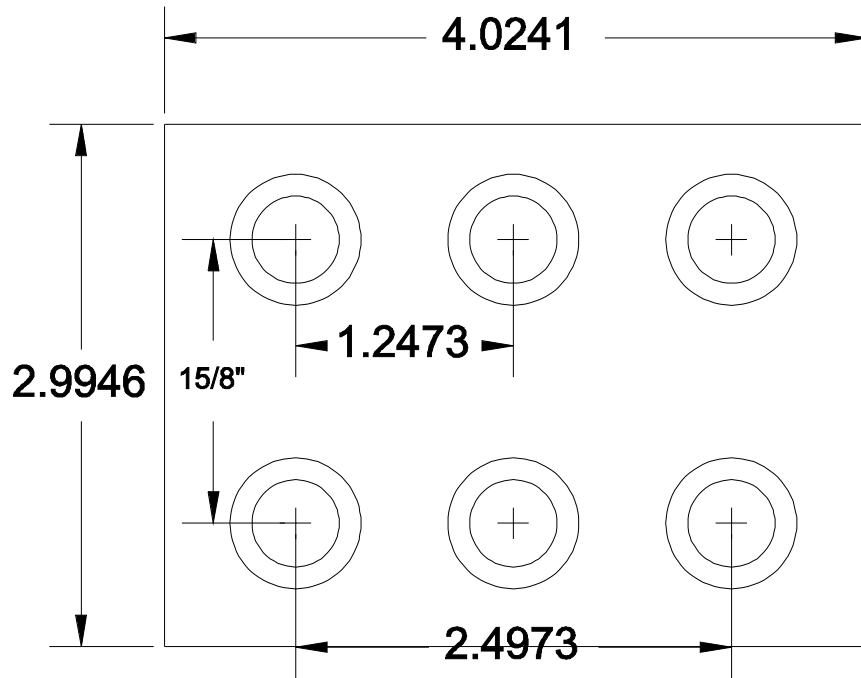
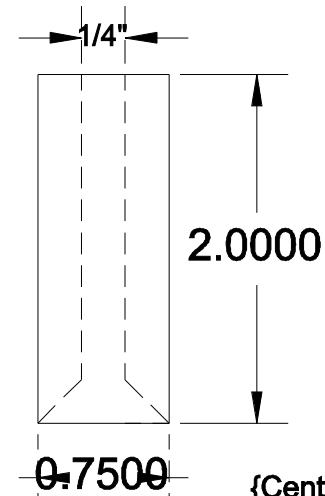


Truck Mounting Hole Jig

{After the Aluminum Base Plate is clamped on to the rail the Steel Drill Guide is placed into each hole and the holes are drilled. Only drill the center holes if you are planning on adjusting your trucks forward and backward. In this case use the Steel Drill Guide and the smooth end of the drill bit to align the Aluminum Base Plate for the second set of holes before re-clamping the jig. }



Steel Drill Guide



{Center hole should match your screw size preference 1/4" or 3/16"}

